

Applicant Luzhou Skinod Technology Co., Ltd
Address Block 28, No.9 Chuangxin Road, Jiangyang District, Luzhou City

The following sample(s) was /were submitted and identified on behalf of the clients as :

Sample Name: Medical infrared thermometer
Trade Name: CLOC 云和家
Model Name: SK-T008, SK-T008A, SK-T008B, SK-T008C, SK-T006, SK-T007, SK-T009, SK-T100, SK-T200, SK-T300
Sample Received Date: March 16, 2020
Testing Period: March 16, 2020-March 18, 2020

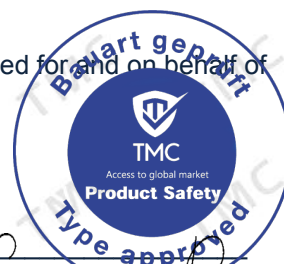
Test Requested: Selected test (s) in the selected parts as requested by client with the RoHS 2.0 Directive (EU) 2015/863 amending Annex II to Directive 2011/65/EU on the restriction of hazardous substances.

Test Method Please refer to next page(s).

Test Result Please refer to next page(s).

Test conclusion: Based upon the performed tests by submitted samples, the test results comply with the limits of the RoHS 2.0 Directive (EU) 2015/863 amending Annex II to Directive 2011/65/EU.

Signed for and on behalf of





Technical Director

Unless otherwise agreed in writing, this document is issued by the company subject to its general conditions of service printed overleaf, available on request or accessible at <http://www.tmc-lab.com>. Attention is drawn to the limitation of liability, indemnification and jurisdiction issues defined therein. This report shall not be altered, increased or deleted. The results shown in this test report refer only to the sample(s) tested. Without written approval of TMC, this test report

shall not be copied except in full and published as advertisement.

RoHS 2.0 Test Result

Sample No.	Components	Test Item(s)	Unit	Test Method (Reference)	Result	MDL	Limit
01	PCB	Cadmium(Cd)	mg/kg	IEC 62321:2017, ICP-AES	36.56	2	100
		Lead(Pb)	mg/kg	IEC 62321:2013, ICP-AES	9.74	2	1000
		Mercury(Hg)	mg/kg	IEC 62321:2013, ICP-AES	N.D.	2	1000
		Hexavalent Chromium(CrVI)	mg/kg	IEC 62321:2015, UV-Vis	N.D.	2	1000
		Sum of PBBs	mg/kg	IEC 62321:2015, GC-MS	N.D.	--	1000
		Sum of PBDEs	mg/kg	IEC 62321:2015, GC-MS	N.D.	--	1000
		Dibutyl Phthalate(DBP)	mg/kg	EN14732:2004, GC-MS	N.D.	30	1000
		Benzylbutyl Phthalate (BBP)	mg/kg	EN14732:2004, GC-MS	N.D.	30	1000
		Di-(2-ethylhexyl) Phthalate(DEHP)	mg/kg	EN14732:2004, GC-MS	N.D.	30	1000
		Diisobutyl phthalate (DIBP)	mg/kg	EN14732:2004, GC-MS	N.D.	30	1000
02	Silicon Button	Cadmium(Cd)	mg/kg	IEC 62321:2017, ICP-AES	N.D.	2	100
		Lead(Pb)	mg/kg	IEC 62321:2013, ICP-AES	N.D.	2	1000
		Mercury(Hg)	mg/kg	IEC 62321:2013, ICP-AES	N.D.	2	1000
		Hexavalent Chromium(CrVI)	mg/kg	IEC 62321:2015, UV-Vis	N.D.	2	1000
		Sum of PBBs	mg/kg	IEC 62321:2015, GC-MS	N.D.	--	1000
		Sum of PBDEs	mg/kg	IEC 62321:2015, GC-MS	N.D.	--	1000
		Dibutyl Phthalate(DBP)	mg/kg	EN14732:2004, GC-MS	N.D.	30	1000
		Benzylbutyl Phthalate (BBP)	mg/kg	EN14732:2004, GC-MS	N.D.	30	1000
		Di-(2-ethylhexyl) Phthalate(DEHP)	mg/kg	EN14732:2004, GC-MS	N.D.	30	1000
		Diisobutyl phthalate (DIBP)	mg/kg	EN14732:2004, GC-MS	N.D.	30	1000

Sample No.	Components	Test Item(s)	Unit	Test Method (Reference)	Result	MDL	Limit
03	White shell	Cadmium(Cd)	mg/kg	IEC 62321:2017, ICP-AES	N.D.	2	100
		Lead(Pb)	mg/kg	IEC 62321:2013, ICP-AES	N.D.	2	1000
		Mercury(Hg)	mg/kg	IEC 62321:2013, ICP-AES	N.D.	2	1000
		Hexavalent Chromium(CrVI)	mg/kg	IEC 62321:2015, UV-Vis	N.D.	2	1000
		Sum of PBBs	mg/kg	IEC 62321:2015, GC-MS	N.D.	--	1000
		Sum of PBDEs	mg/kg	IEC 62321:2015, GC-MS	N.D.	--	1000
		Dibutyl Phthalate(DBP)	mg/kg	EN14732:2004, GC-MS	N.D.	30	1000
		Benzylbutyl Phthalate (BBP)	mg/kg	EN14732:2004, GC-MS	N.D.	30	1000
		Di-(2-ethylhexyl) Phthalate(DEHP)	mg/kg	EN14732:2004, GC-MS	N.D.	30	1000
		Diisobutyl phthalate (DIBP)	mg/kg	EN14732:2004, GC-MS	N.D.	30	1000
04	Gray shell	Cadmium(Cd)	mg/kg	IEC 62321:2017, ICP-AES	2.33	2	100
		Lead(Pb)	mg/kg	IEC 62321:2013, ICP-AES	N.D.	2	1000
		Mercury(Hg)	mg/kg	IEC 62321:2013, ICP-AES	N.D.	2	1000
		Hexavalent Chromium(CrVI)	mg/kg	IEC 62321:2015, UV-Vis	N.D.	2	1000
		Sum of PBBs	mg/kg	IEC 62321:2015, GC-MS	N.D.	--	1000
		Sum of PBDEs	mg/kg	IEC 62321:2015, GC-MS	N.D.	--	1000
		Dibutyl Phthalate(DBP)	mg/kg	EN14732:2004, GC-MS	N.D.	30	1000
		Benzylbutyl Phthalate (BBP)	mg/kg	EN14732:2004, GC-MS	N.D.	30	1000
		Di-(2-ethylhexyl) Phthalate(DEHP)	mg/kg	EN14732:2004, GC-MS	N.D.	30	1000
		Diisobutyl phthalate (DIBP)	mg/kg	EN14732:2004, GC-MS	N.D.	30	1000

Sample No.	Components	Test Item(s)	Unit	Test Method (Reference)	Result	MDL	Limit
05	Glass	Cadmium(Cd)	mg/kg	IEC 62321:2017, ICP-AES	N.D.	2	100
		Lead(Pb)	mg/kg	IEC 62321:2013, ICP-AES	N.D.	2	1000
		Mercury(Hg)	mg/kg	IEC 62321:2013, ICP-AES	N.D.	2	1000
		Hexavalent Chromium(CrVI)	mg/kg	IEC 62321:2015, UV-Vis	N.D.	2	1000
		Sum of PBBs	mg/kg	IEC 62321:2015, GC-MS	N.D.	--	1000
		Sum of PBDEs	mg/kg	IEC 62321:2015, GC-MS	N.D.	--	1000
		Dibutyl Phthalate(DBP)	mg/kg	EN14732:2004, GC-MS	N.D.	30	1000
		Benzylbutyl Phthalate (BBP)	mg/kg	EN14732:2004, GC-MS	N.D.	30	1000
		Di-(2-ethylhexyl) Phthalate(DEHP)	mg/kg	EN14732:2004, GC-MS	N.D.	30	1000
		Diisobutyl phthalate (DIBP)	mg/kg	EN14732:2004, GC-MS	N.D.	30	1000
06	Screen	Cadmium(Cd)	mg/kg	IEC 62321:2017, ICP-AES	N.D.	2	100
		Lead(Pb)	mg/kg	IEC 62321:2013, ICP-AES	N.D.	2	1000
		Mercury(Hg)	mg/kg	IEC 62321:2013, ICP-AES	N.D.	2	1000
		Hexavalent Chromium(CrVI)	mg/kg	IEC 62321:2015, UV-Vis	N.D.	2	1000
		Sum of PBBs	mg/kg	IEC 62321:2015, GC-MS	N.D.	--	1000
		Sum of PBDEs	mg/kg	IEC 62321:2015, GC-MS	N.D.	--	1000
		Dibutyl Phthalate(DBP)	mg/kg	EN14732:2004, GC-MS	N.D.	30	1000
		Benzylbutyl Phthalate (BBP)	mg/kg	EN14732:2004, GC-MS	N.D.	30	1000
		Di-(2-ethylhexyl) Phthalate(DEHP)	mg/kg	EN14732:2004, GC-MS	N.D.	30	1000
		Diisobutyl phthalate (DIBP)	mg/kg	EN14732:2004, GC-MS	N.D.	30	1000

Sample No.	Components	Test Item(s)	Unit	Test Method (Reference)	Result	MDL	Limit
07	Battery deck	Cadmium(Cd)	mg/kg	IEC 62321:2017, ICP-AES	N.D.	2	100
		Lead(Pb)	mg/kg	IEC 62321:2013, ICP-AES	N.D.	2	1000
		Mercury(Hg)	mg/kg	IEC 62321:2013, ICP-AES	N.D.	2	1000
		Hexavalent Chromium(CrVI)	mg/kg	IEC 62321:2015, UV-Vis	N.D.	2	1000
		Sum of PBBs	mg/kg	IEC 62321:2015, GC-MS	N.D.	--	1000
		Sum of PBDEs	mg/kg	IEC 62321:2015, GC-MS	N.D.	--	1000
		Dibutyl Phthalate(DBP)	mg/kg	EN14732:2004, GC-MS	--	30	1000
		Benzylbutyl Phthalate (BBP)	mg/kg	EN14732:2004, GC-MS	--	30	1000
		Di-(2-ethylhexyl) Phthalate(DEHP)	mg/kg	EN14732:2004, GC-MS	--	30	1000
		Diisobutyl phthalate (DIBP)	mg/kg	EN14732:2004, GC-MS	--	30	1000
08	Battery	Cadmium(Cd)	mg/kg	IEC 62321:2017, ICP-AES	23.66	2	100
		Lead(Pb)	mg/kg	IEC 62321:2013, ICP-AES	N.D.	2	1000
		Mercury(Hg)	mg/kg	IEC 62321:2013, ICP-AES	N.D.	2	1000
		Hexavalent Chromium(CrVI)	mg/kg	IEC 62321:2015, UV-Vis	N.D.	2	1000
		Sum of PBBs	mg/kg	IEC 62321:2015, GC-MS	N.D.	--	1000
		Sum of PBDEs	mg/kg	IEC 62321:2015, GC-MS	N.D.	--	1000
		Dibutyl Phthalate(DBP)	mg/kg	EN14732:2004, GC-MS	N.D.	30	1000
		Benzylbutyl Phthalate (BBP)	mg/kg	EN14732:2004, GC-MS	N.D.	30	1000
		Di-(2-ethylhexyl) Phthalate(DEHP)	mg/kg	EN14732:2004, GC-MS	N.D.	30	1000
		Diisobutyl phthalate (DIBP)	mg/kg	EN14732:2004, GC-MS	N.D.	30	1000

Sample No.	Components	Test Item(s)	Unit	Test Method (Reference)	Result	MDL	Limit
09	Transparent shell	Cadmium(Cd)	mg/kg	IEC 62321:2017, ICP-AES	N.D.	2	100
		Lead(Pb)	mg/kg	IEC 62321:2013, ICP-AES	N.D.	2	1000
		Mercury(Hg)	mg/kg	IEC 62321:2013, ICP-AES	N.D.	2	1000
		Hexavalent Chromium(Cr)	mg/kg	IEC 62321:2015, UV-Vis	N.D.	2	1000
		Sum of PBBs	mg/kg	IEC 62321:2015, GC-MS	N.D.	--	1000
		Sum of PBDEs	mg/kg	IEC 62321:2015, GC-MS	N.D.	--	1000
		Dibutyl Phthalate(DBP)	mg/kg	EN14732:2004, GC-MS	N.D.	30	1000
		Benzylbutyl Phthalate	mg/kg	EN14732:2004, GC-MS	N.D.	30	1000
		Di-(2-ethylhexyl)	mg/kg	EN14732:2004, GC-MS	N.D.	30	1000
		Diisobutyl phthalate	mg/kg	EN14732:2004, GC-MS	N.D.	30	1000
10	Red wire	Cadmium(Cd)	mg/kg	IEC 62321:2017, ICP-AES	N.D.	2	100
		Lead(Pb)	mg/kg	IEC 62321:2013, ICP-AES	N.D.	2	1000
		Mercury(Hg)	mg/kg	IEC 62321:2013, ICP-AES	N.D.	2	1000
		Hexavalent Chromium(Cr)	mg/kg	IEC 62321:2015, UV-Vis	N.D.	2	1000
		Sum of PBBs	mg/kg	IEC 62321:2015, GC-MS	N.D.	--	1000
		Sum of PBDEs	mg/kg	IEC 62321:2015, GC-MS	N.D.	--	1000
		Dibutyl Phthalate(DBP)	mg/kg	EN14732:2004, GC-MS	N.D.	30	1000
		Benzylbutyl Phthalate	mg/kg	EN14732:2004, GC-MS	N.D.	30	1000
		Di-(2-ethylhexyl)	mg/kg	EN14732:2004, GC-MS	N.D.	30	1000
		Diisobutyl phthalate	mg/kg	EN14732:2004, GC-MS	N.D.	30	1000

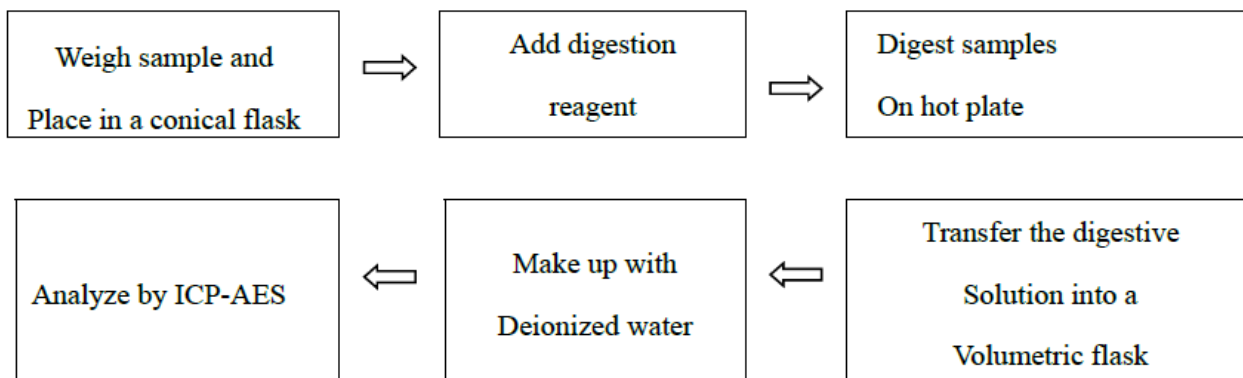
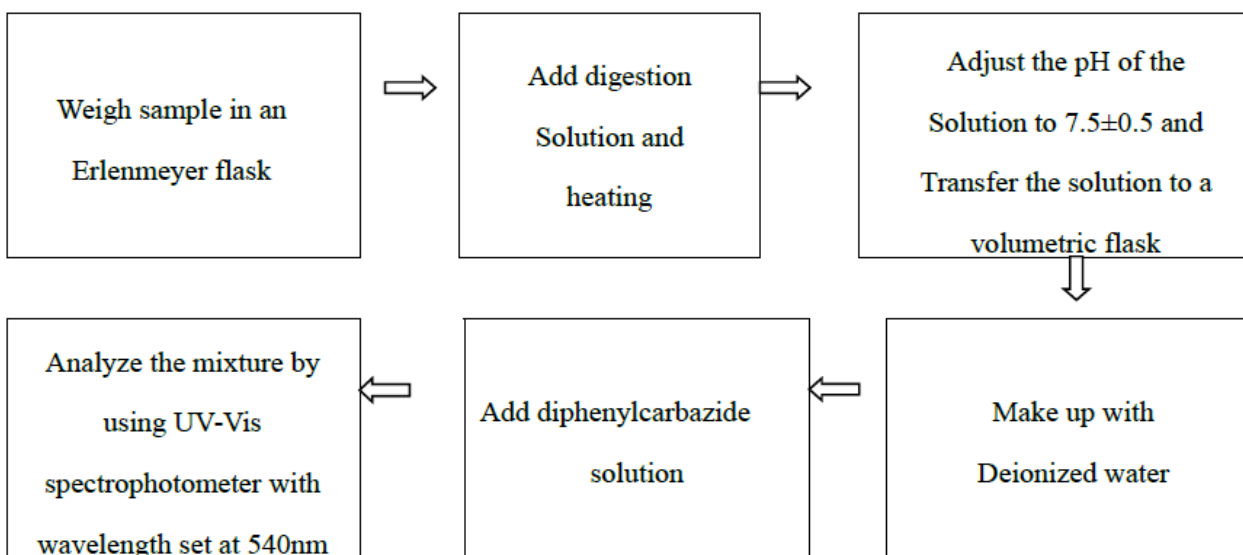
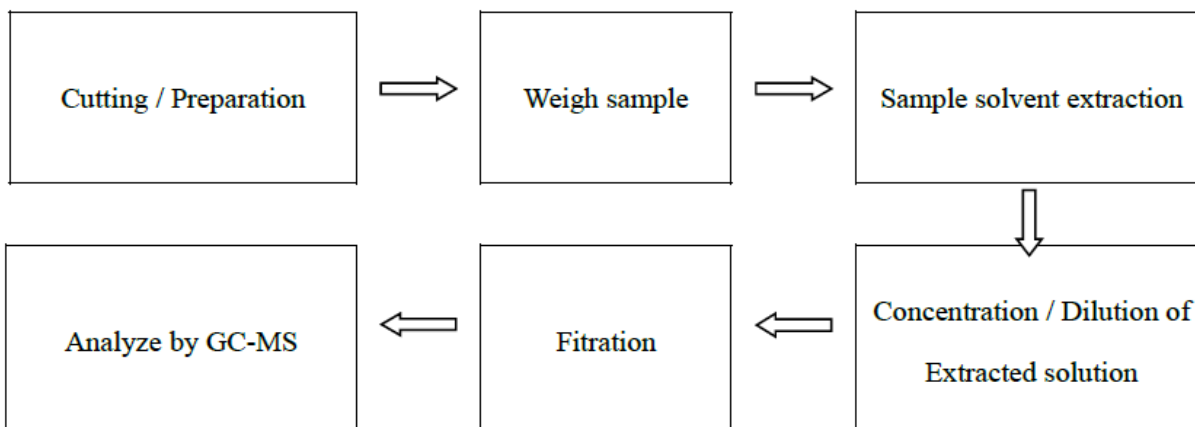
Sample No.	Components	Test Item(s)	Unit	Test Method (Reference)	Result	MDL	Limit
11	Black wire	Cadmium(Cd)	mg/kg	IEC 62321:2017, ICP-AES	1.11	2	100
		Lead(Pb)	mg/kg	IEC 62321:2013, ICP-AES	N.D.	2	1000
		Mercury(Hg)	mg/kg	IEC 62321:2013, ICP-AES	N.D.	2	1000
		Hexavalent Chromium(Cr)	mg/kg	IEC 62321:2015, UV-Vis	N.D.	2	1000
		Sum of PBBs	mg/kg	IEC 62321:2015, GC-MS	N.D.	--	1000
		Sum of PBDEs	mg/kg	IEC 62321:2015, GC-MS	N.D.	--	1000
		Dibutyl Phthalate(DBP)	mg/kg	EN14732:2004, GC-MS	N.D.	30	1000
		Benzylbutyl Phthalate	mg/kg	EN14732:2004, GC-MS	N.D.	30	1000
		Di-(2-ethylhexyl)	mg/kg	EN14732:2004, GC-MS	N.D.	30	1000
		Diisobutyl phthalate	mg/kg	EN14732:2004, GC-MS	N.D.	30	1000
12	Yellow wire	Cadmium(Cd)	mg/kg	IEC 62321:2017, ICP-AES	N.D.	2	100
		Lead(Pb)	mg/kg	IEC 62321:2013, ICP-AES	N.D.	2	1000
		Mercury(Hg)	mg/kg	IEC 62321:2013, ICP-AES	N.D.	2	1000
		Hexavalent Chromium(Cr)	mg/kg	IEC 62321:2015, UV-Vis	N.D.	2	1000
		Sum of PBBs	mg/kg	IEC 62321:2015, GC-MS	N.D.	--	1000
		Sum of PBDEs	mg/kg	IEC 62321:2015, GC-MS	N.D.	--	1000
		Dibutyl Phthalate(DBP)	mg/kg	EN14732:2004, GC-MS	N.D.	30	1000
		Benzylbutyl Phthalate	mg/kg	EN14732:2004, GC-MS	N.D.	30	1000
		Di-(2-ethylhexyl)	mg/kg	EN14732:2004, GC-MS	N.D.	30	1000
		Diisobutyl phthalate	mg/kg	EN14732:2004, GC-MS	N.D.	30	1000

Sample No.	Components	Test Item(s)	Unit	Test Method (Reference)	Result	MDL	Limit
13	Switch	Cadmium(Cd)	mg/kg	IEC 62321:2017, ICP-AES	N.D.	2	100
		Lead(Pb)	mg/kg	IEC 62321:2013, ICP-AES	N.D.	2	1000
		Mercury(Hg)	mg/kg	IEC 62321:2013, ICP-AES	N.D.	2	1000
		Hexavalent Chromium(Cr)	mg/kg	IEC 62321:2015, UV-Vis	N.D.	2	1000
		Sum of PBBs	mg/kg	IEC 62321:2015, GC-MS	N.D.	--	1000
		Sum of PBDEs	mg/kg	IEC 62321:2015, GC-MS	N.D.	--	1000
		Dibutyl Phthalate(DBP)	mg/kg	EN14732:2004, GC-MS	N.D.	30	1000
		Benzylbutyl Phthalate	mg/kg	EN14732:2004, GC-MS	N.D.	30	1000
		Di-(2-ethylhexyl)	mg/kg	EN14732:2004, GC-MS	N.D.	30	1000
		Diisobutyl phthalate	mg/kg	EN14732:2004, GC-MS	N.D.	30	1000
14	Green wire	Cadmium(Cd)	mg/kg	IEC 62321:2017, ICP-AES	N.D.	2	100
		Lead(Pb)	mg/kg	IEC 62321:2013, ICP-AES	N.D.	2	1000
		Mercury(Hg)	mg/kg	IEC 62321:2013, ICP-AES	N.D.	2	1000
		Hexavalent Chromium(Cr)	mg/kg	IEC 62321:2015, UV-Vis	N.D.	2	1000
		Sum of PBBs	mg/kg	IEC 62321:2015, GC-MS	N.D.	--	1000
		Sum of PBDEs	mg/kg	IEC 62321:2015, GC-MS	N.D.	--	1000
		Dibutyl Phthalate(DBP)	mg/kg	EN14732:2004, GC-MS	N.D.	30	1000
		Benzylbutyl Phthalate	mg/kg	EN14732:2004, GC-MS	N.D.	30	1000
		Di-(2-ethylhexyl)	mg/kg	EN14732:2004, GC-MS	N.D.	30	1000
		Diisobutyl phthalate	mg/kg	EN14732:2004, GC-MS	N.D.	30	1000

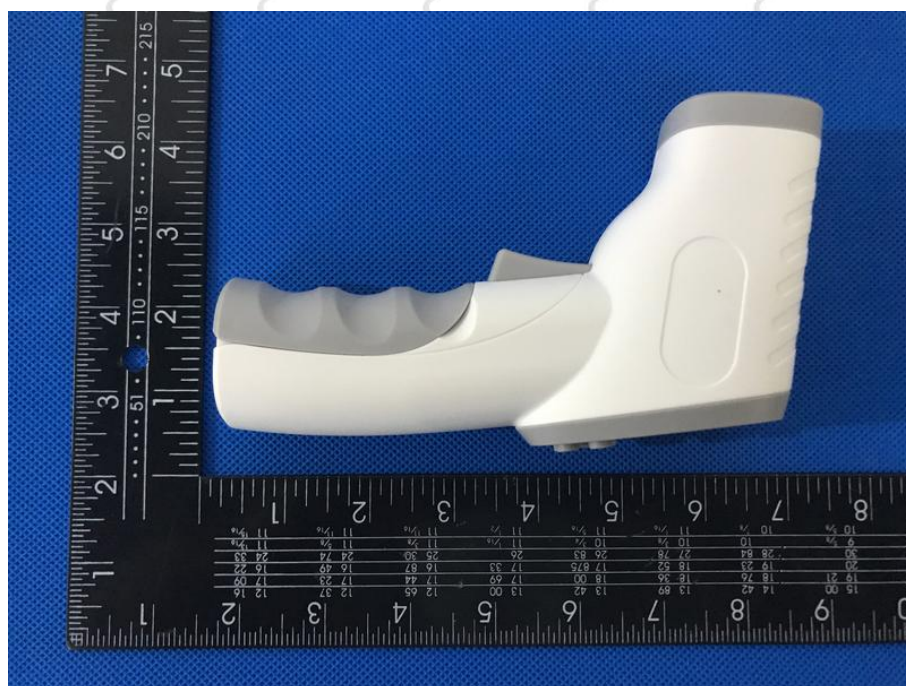
Sample No.	Components	Test Item(s)	Unit	Test Method (Reference)	Result	MDL	Limit
15	Switch	Cadmium(Cd)	mg/kg	IEC 62321:2017, ICP-AES	N.D.	2	100
		Lead(Pb)	mg/kg	IEC 62321:2013, ICP-AES	N.D.	2	1000
		Mercury(Hg)	mg/kg	IEC 62321:2013, ICP-AES	N.D.	2	1000
		Hexavalent Chromium(Cr)	mg/kg	IEC 62321:2015, UV-Vis	N.D.	2	1000
		Sum of PBBs	mg/kg	IEC 62321:2015, GC-MS	N.D.	--	1000
		Sum of PBDEs	mg/kg	IEC 62321:2015, GC-MS	N.D.	--	1000
		Dibutyl Phthalate(DBP)	mg/kg	EN14732:2004, GC-MS	N.D.	30	1000
		Benzylbutyl Phthalate	mg/kg	EN14732:2004, GC-MS	N.D.	30	1000
		Di-(2-ethylhexyl)	mg/kg	EN14732:2004, GC-MS	N.D.	30	1000
		Diisobutyl phthalate	mg/kg	EN14732:2004, GC-MS	N.D.	30	1000
16	Sealing strip	Cadmium(Cd)	mg/kg	IEC 62321:2017, ICP-AES	N.D.	2	100
		Lead(Pb)	mg/kg	IEC 62321:2013, ICP-AES	N.D.	2	1000
		Mercury(Hg)	mg/kg	IEC 62321:2013, ICP-AES	N.D.	2	1000
		Hexavalent Chromium(Cr)	mg/kg	IEC 62321:2015, UV-Vis	N.D.	2	1000
		Sum of PBBs	mg/kg	IEC 62321:2015, GC-MS	N.D.	--	1000
		Sum of PBDEs	mg/kg	IEC 62321:2015, GC-MS	N.D.	--	1000
		Dibutyl Phthalate(DBP)	mg/kg	EN14732:2004, GC-MS	N.D.	30	1000
		Benzylbutyl Phthalate	mg/kg	EN14732:2004, GC-MS	N.D.	30	1000
		Di-(2-ethylhexyl)	mg/kg	EN14732:2004, GC-MS	N.D.	30	1000
		Diisobutyl phthalate	mg/kg	EN14732:2004, GC-MS	N.D.	30	1000

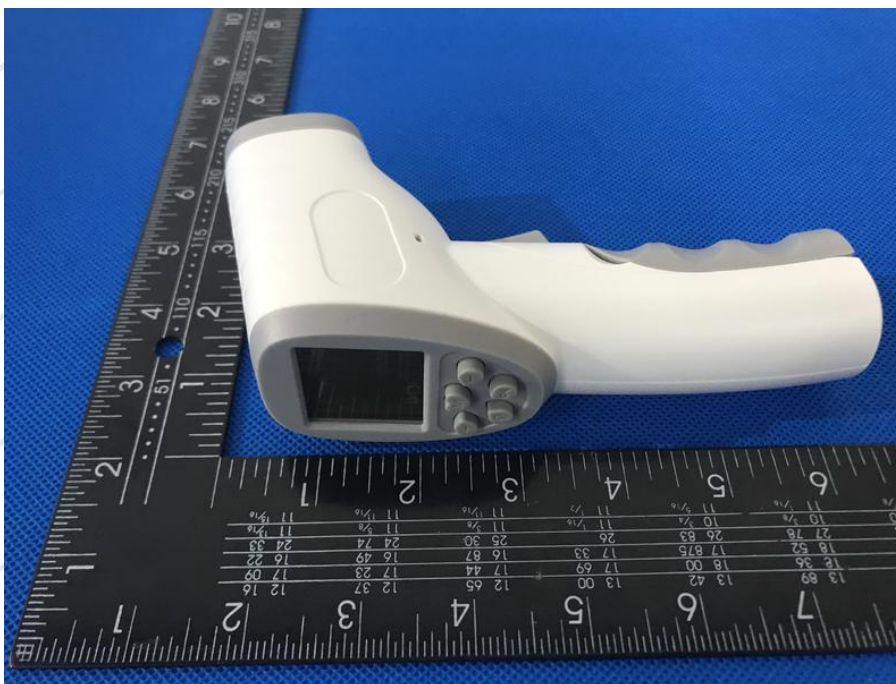
Note:

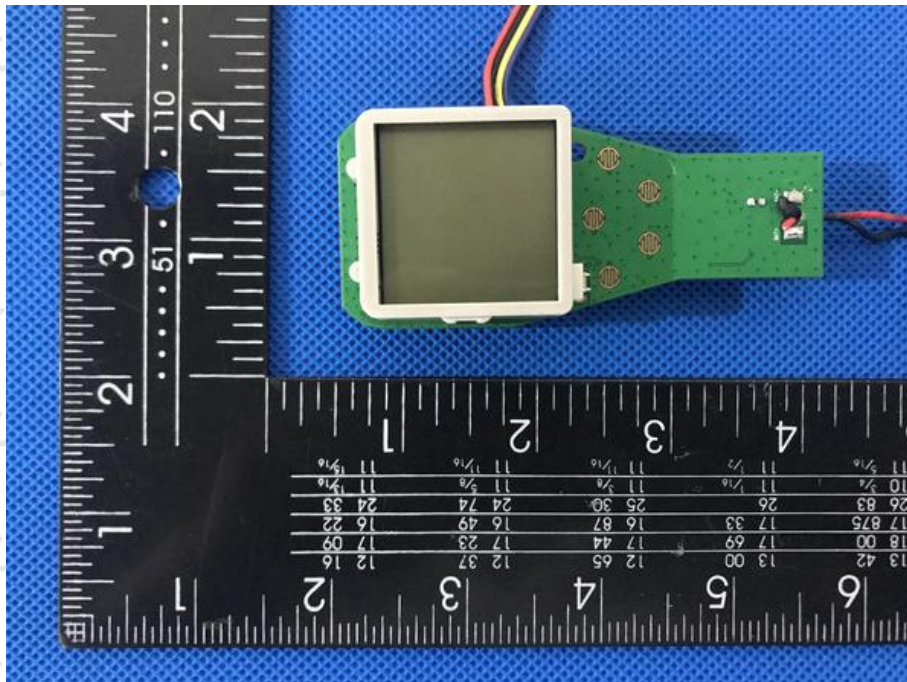
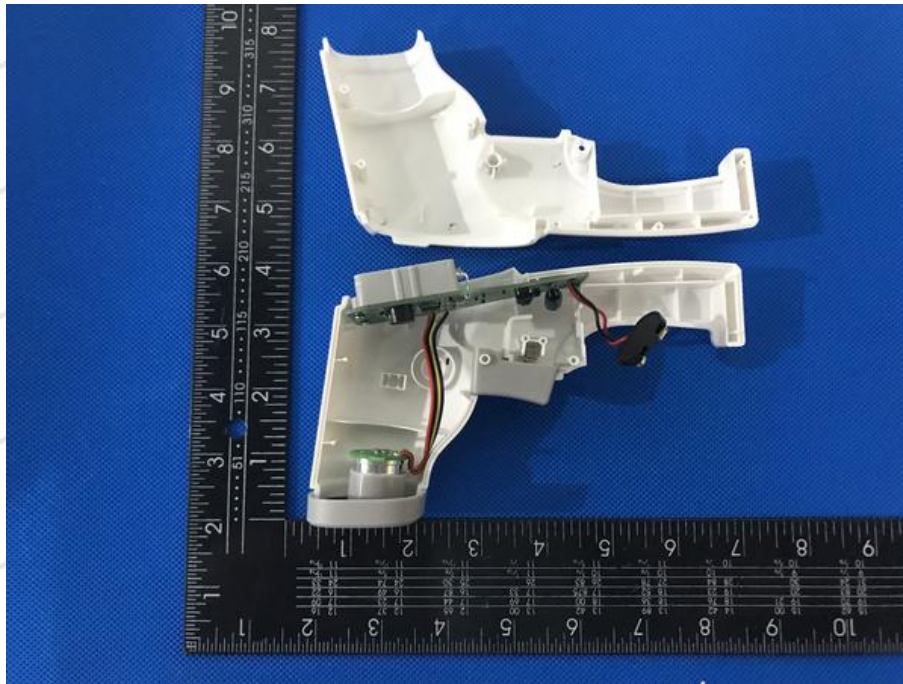
1. mg/kg= ppm
2. N.D. = No Detection (<MDL)
3. MDL = Method Detection Limit
4. -- = No Testing

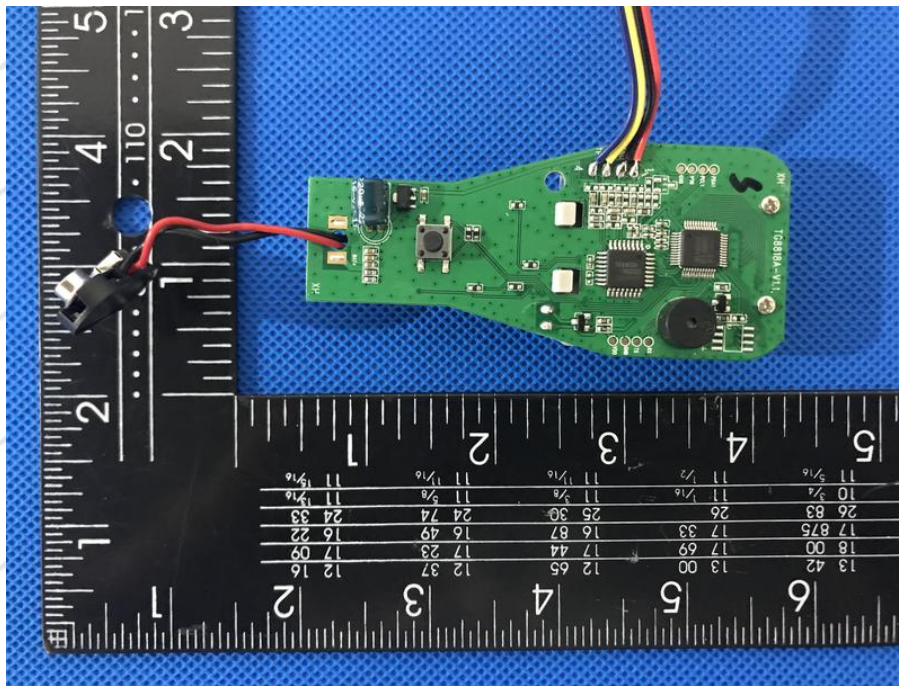
Test Process:
1. Test for Cd/Pb /Hg

2. Test for Chromium (VI) Content

3. Test for PBBs/PBDES/DIBP/DBP/BBP/DEHP Content


Sample photo:









END OF REPORT